



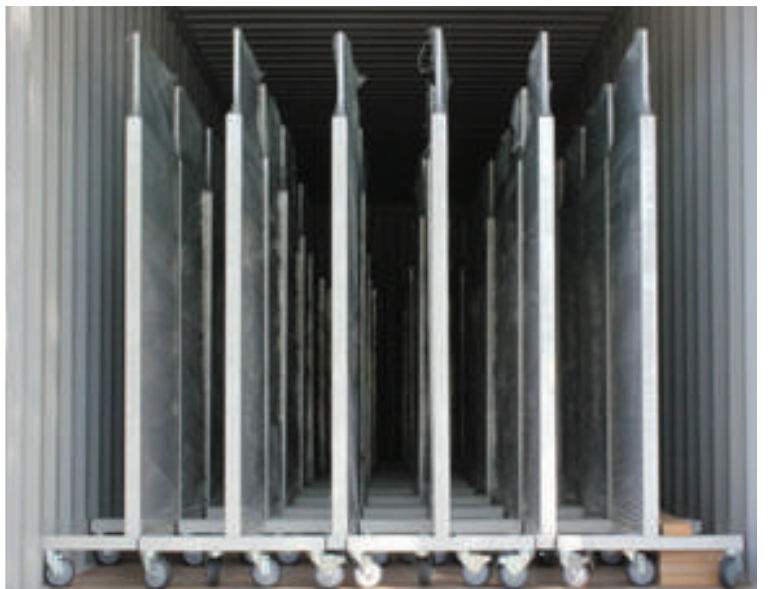


INFAB

 Corporation

RADIATION PROTECTION CATALOG

G 2015



ISO 9000:2008 - Quality Management

Infab Corporation is pleased to be a part of the ISO 9000 family, an exclusive network of companies that focus on high quality products, customer service and management with the customer's full and complete satisfaction in mind. The ISO 9000 family addresses various aspects of quality management and contains some of ISO's best known standards. The standards provide guidance and tools for companies and organizations who **want to ensure that their products and services consistently meet customer's requirements, and that quality is consistently improved.** ISO 9001:2008 sets out the requirements of a quality management system.

ISO 9001:2008

ISO 9001:2008 sets out the criteria for a quality management system and is the only standard that can be certified to. The standard is based on a number of quality management principles **including a strong customer focus, the motivation and implication of top management, the process approach and continual improvement.** ISO 9001:2008 helps ensure that customers get consistent, good quality products and services.

Along with our FDA registration, 510k certifications and implementation of FDA Good Manufacturing Practices (GMP's), our CE certificate and now our ISO 9001:2008 certification you can rest assured that our products are manufactured to the very highest standards in existence. No other manufacturer of radiation protection products and accessories can claim a more stringent manufacturing process or higher level of certification.

When you buy Infab products buy with the confidence that four different auditing organizations have certified our products. Infab products are manufactured to the highest standards in existence.

Authorised Distributor: A Different Approach Ltd, 9 Edozie Street, Uwani, Enugu. Nigeria. Tel: 08081719447, 07063860581



Infab Corporation designs and builds the world's most reliable, comfortable and technologically advanced radiation attenuation products. We enable health care providers and patients to apply and benefit from the diagnostic capabilities of imaging technology with the peace of mind that comes from knowing they are protected by the best engineered garments, eye gear and protective barriers on the planet.



Infab Corporation has been an innovator and leader in the radiation protection industry since our inception in 1981.

The core purpose of Infab has always been to produce superior radiation protection equipment and provide the best customer service in the industry. We have built our entire company around these values. There is no better testament to our success than the satisfied and protected healthcare professionals we serve. Craftsmanship is paramount; our aprons are all handmade and rigorously inspected. Our team will stop at nothing to make sure that your entire experience exceeds your expectations. At Infab, we have strived to develop a cohesive internal culture and we consider our customers to be an extension of our team. We invite you to visit our facility and see our operation for yourself.

Infab truly gives you freedom of choice without having to compromise safety and quality. **Smart Armor™** is our guaranteed, industry leading core material. **Smart Armor™** is the only brand of protection that is backed up by a **10-year core warranty** against cracking, crumbling or stiffening. This comes in three radiation protection materials; Regular Lead, Lightweight Composite and Greenlite lead-free material. All of our materials have four levels of independently tested attenuation and lead equivalency certifications.

Infab's products will give you a proven feeling of security in the field. We pride ourselves in being the most accessible company in the market and will alleviate any concerns and handle all possible problems efficiently, with your satisfaction paramount. Here at Infab, we go above and beyond to ensure that our customers have the best product and the best experience. We know our customer's time is valuable. You care for patients, leave all the logistics to us.

Too many service professionals in this industry are not sufficiently trained. Their job stops after the sale. That is not true at Infab. We understand the schedules and needs of medical professionals. We will present the most accurate product information to help you make an informed decision and we will ship your order out faster than anyone else. Infab will take care of you for the life of your apron and you will see that a partnership with us gives you one less thing to worry about. Our goal is to turn every customer into a long lasting, loyal user. When you work with Infab, you're part of the team!



Regular Lead



Lightweight Composite



Greenlite Lead-Free



Cool Wear Fabric Liner



The Original Black Belt®



Smart Armor™ Guarantee



**SMART
ARMOR**
10 YEAR CORE GUARANTEE

Only Infab Guarantees Our Core Material Will Not Stiffen, Crack, or Crumble For a Minimum of 10 Years From Date of Purchase.

10 Year Warranty

Infab guarantees our core material will not stiffen, crack, or crumble for a minimum of 10 years from the date of purchase.

Latest Technology

With over 30 years of research, Infab's 3 types of Smart Armor core material are the best in the industry.



Regular Lead



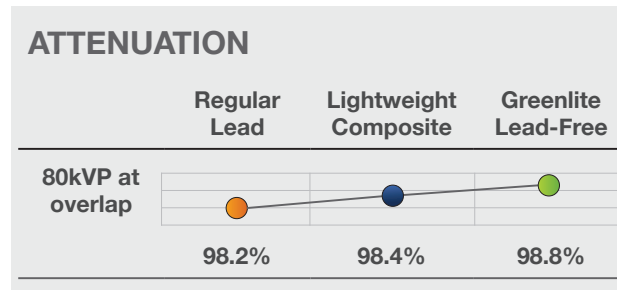
Lightweight Composite



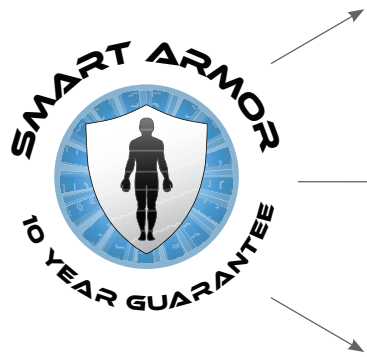
Greenlite Lead-Free

Highest Attenuation

Infab's Smart Armor line (Greenlite lead-free, Lightweight Composite, and Regular Lead) of core material have the highest attenuation level in the industry from 60 kVp to 130 kVp direct beam



Protection Options



Greenlite Lead-Free

Infab Corporation GREENLITE Radiation Protection Materials are composed of emulsion polymers, finely divided lead-free metal particles including antimony and barium, stabilizers and pigments.

The unique manufacturing process involves a multi-layer construction that produces a homogenous sheet we call Smart Armor because of its superior protection capabilities and long lasting quality.

This insures an even distribution of the specially graded pure metal particles within the vinyl matrix and therefore a consistent level of protection throughout the sheeting.



Lightweight Composite

Infab Corporation LIGHTWEIGHT COMPOSITE Radiation Protection Materials are composed of emulsion polymers, finely divided metal particles including lead, antimony and barium,

stabilizers and pigments The unique manufacturing process involves a multi-layer construction that produces a homogenous sheet we call Smart Armor because of its superior protection capabilities and long

lasting quality. This insures an even distribution of the specially graded pure metal particles within the vinyl matrix and therefore a consistent level of protection throughout the sheeting.



Regular Lead

Infab Corporation LEAD Radiation Protection Materials are composed of emulsion polymers, finely divided 100% pure lead metal particles, stabilizers and pigments. The unique manufacturing

process involves a multi-layer construction that produces a homogenous sheet we call Smart Armor because of its superior protection capabilities and long lasting quality. This insures an even distribution

of the specially graded pure metal particles within the vinyl matrix and therefore a consistent level of protection throughout the sheeting.



Every Apron Made By Hand

Infab believes in only putting the best quality products in our customer's hands. We believe the only way for our customers to truly get the best x-ray protection aprons on the market, they need to be made

individually, by hand. Our team has been making every apron Infab has sold by hand for over 30 years. Every stitch, monogram, logo, alteration is taken care of with the highest level of care and pride.

Infab Smart Armor™ Attenuation

ONLY Infab Corporation has every batch of core material tested by a third party, independent Health Physics laboratory.

	Regular Lead	Lightweight Composite Lead	Greenlite Lead-Free
DIRECT BEAM	Attenuation Health Physics Northwest independent attenuation testing results ¹		
80 kVp	98.2%	98.4%	98.8%
100 kVp	96.0%	96.3%	96.7%
120 kVp	95.1%	95.4%	94.1%
130 kVp	92.0%	95.0%	93.5%
	Weight Average based on Male Medium Front Protection Apron		
	APRON WEIGHT	APRON WEIGHT	APRON WEIGHT
	6.274 lbs (2.851 kg)	5.119 lbs (2.326 kg)	5.119 lbs (2.326 kg)

Only Infab tests our core material across an entire spectrum from 80kVp to 130 kVp and reports the actual attenuation figures. This is for your safety. There IS A DIFFERENCE and it will affect the level of protection you receive. Simply stating “.50mm lead equivalency at 80kVp” is not good enough. Know the entire facts before you purchase a radiation protection apron. We encourage you to ask other apron manufacturers for their most current test data

Attenuation to Lead Equivalency Conversion Chart

Lead Equivalency	50 kVp	60 kVp	70 kVp	80 kVp	90 kVp	100 kVp	120 kVp	130 kVp	140 kVp	160 kVp
0.125	93.3%	88.8%	83.6%	79.3%	75.6%	71.7%	66.9%	64.7%	62.4%	60.7%
0.25	99.0%	97.3%	94.6%	91.8%	88.8%	86.4%	83.4%	82.1%	80.3%	79.1%
0.30	99.4%	98.3%	96.2%	93.9%	91.3%	89.3%	86.9%	85.7%	84.3%	83.2%
0.35	99.7%	98.9%	97.2%	95.2%	92.8%	91.0%	89.0%	87.9%	86.7%	85.7%
0.50	100%	99.7%	99.0%	97.9%	96.6%	95.5%	94.4%	93.9%	93.2%	92.7%
0.75				99.4%		98.4%	97.9%		97.5%	97.2%
1.0							99.0%		98.8%	98.6%

References:

1. Independent attenuation test results performed on material samples submitted to Health Physics Northwest. Samples were evaluated in accordance with ASTM Test Method F 2547-06 at independent off-site location utilizing GE Proteus high frequency X-ray generator. Testing performed at settings of 90, 100, and 120 kVp (April 8, 2010, Data on file).
2. Weight protection data on file. Infab Corporation, Camarillo, CA. 2010.

Your Apron, Your Design

View Online
InfabCorp.com




Infab offers you the ultimate customization tool with our “Design Your Own Apron Fabric” option.

If you have a favorite picture, logo, or drawing send it to us. We will design your apron fabric, send it back for your approval, and for a small up-charge, build you your own one-of-a-kind Infab apron! We can place your image anywhere on the apron, as large as you want or as small as you want. We can even make it a pattern.

The options are endless, and the customization is completely in your hands. Your apron, your design!

Any Logo, Any Apron



Send us your logo and we will map it to your apron, send it back for your approval and then create an apron with your unique logo.

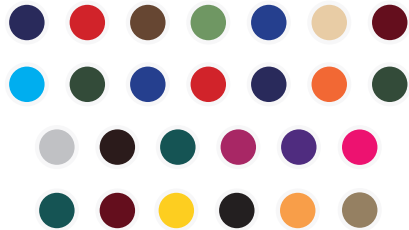


Custom Trim

Infab gives you the option to not only customize the color of your entire apron, but also the trim for a truly custom look!

Choose from one of our great trim options, seen below:

Trim Options





Inside & Velcro

In addition to customizing the outside of your apron, Infab gives you the ability to customize the inside of your apron as well. Standard red apron with zebra print inside? Sure. Standard blue apron with rainbow inside? You bet. The options are nearly endless, so create your own one-of-a-kind apron today.

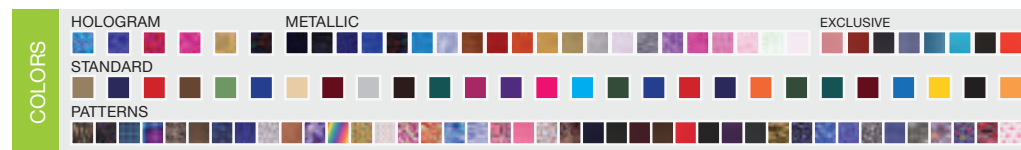
In addition to our custom trim options, Infab also offers custom Velcro. Choose from any of the following Velcro options to customize your apron even further.

Velcro Color Options



Inside Apron Color Options

Full Color Chart: Page 48



Logos & Images

We can digitize your logo.

We can create a custom apron based on your logo.



Monograms

Linda Joyce, MD

Linda Joyce, MD

Script Monogram

Block Monogram

Part No. SNME

Part No. BNME

*Aa Bb Cc Dd Ee Ff Gg Hh Ii Jj
Kk Ll Mm Nn Oo Pp Qq Rr Ss
Tt Uu Vv Ww Xx Yy Zz*

Aa Bb Cc Dd Ee Ff Gg Hh Ii Jj
Kk Ll Mm Nn Oo Pp Qq Rr Ss
Tt Uu Vv Ww Xx Yy Zz

1234567890

1234567890

More than 10,000 Stock Logos & Designs

Visit www.infabcorp.com and search by keyword.

Female Standard & Custom Sizing

Infab wants you to get an apron that fits exactly how it should. Both for comfort and protection getting the right fitting apron is incredibly important. Follow these simple instructions to ensure your apron fits the right way upon arrival.

- Measure all full-wrap vest apron lengths from the back of neck to the bottom hem of vest (make sure to include overlap of skirt)
- Measure all skirt apron lengths from the waist to the bottom hem of skirts
- Measure all elastic back vest apron lengths from the sternal notch

Female Frames

	X-Small	Small	Medium	Large	X-Large	XX-Large
Bust	33	34-35	36-38	39-41	42-45	46-49
Waist	25	26-27	28-30	31-33	34-36	37-40
Hips	35	36-37	38-40	41-43	44-47	48+

Standard Female Apron Lengths

	One-Piece	Vest	Skirt
X-Small	34"/ 86 cm	18"/ 46 cm	18"/ 46 cm
Small	34"/ 86 cm	20"/ 51 cm	20"/ 51 cm
Medium	34"/ 86 cm	22"/ 56 cm	22"/ 56 cm
Large	34"/ 86 cm	23"/ 58 cm	23"/ 58 cm
X-Large	34"/ 86 cm	24"/ 61 cm	24"/ 61 cm
XX-Large	34"/ 86 cm	25"/ 61 cm	25"/ 61 cm



Measure all the way around body circumference at the widest point for all the measurements.

Male Standard & Custom Sizing



Measure all the way around body circumference at the widest point for all the measurements.

Infab wants you to get an apron that fits exactly how it should. Both for comfort and protection getting the right fitting apron is incredibly important. Follow these simple instructions to ensure your apron fits the right way upon arrival.

- Measure all front protection apron lengths from the sternal notch to the bottom hem
- Measure all full protection apron lengths from the back of the neck to the bottom hem

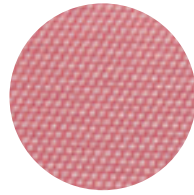
Male Frames

	Small	Medium	Large	X-Large	XX-Large
Chest	34-36	38-40	42-44	46-48	50-52
Waist	28-30	32-35	36-38	40-42	44-46

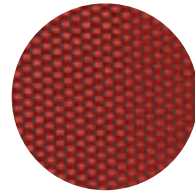
Standard Male Apron Lengths

	One-Piece	Vest	Skirt
Small	34"/ 86 cm	20"/ 51 cm	20"/ 51 cm
Medium	34"/ 86 cm	22"/ 56 cm	22"/ 56 cm
Large	34"/ 86 cm	23"/ 58 cm	23"/ 58 cm
X-Large	34"/ 86 cm	24"/ 61 cm	24"/ 61 cm
XX-Large	34"/ 86 cm	25"/ 64 cm	25"/ 64 cm

Infab's Exclusive



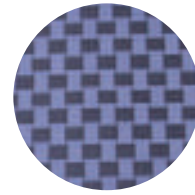
220
Strawberry



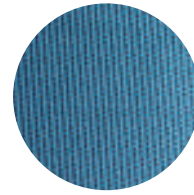
222
Red Scales



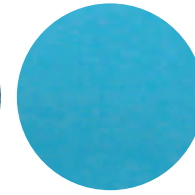
224
Diamond Back



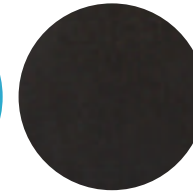
246
Blue Weave



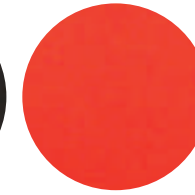
250
Teal Tweed



300
Blue Waterproof



301
Black Waterproof



302
Red Waterproof

Hologram

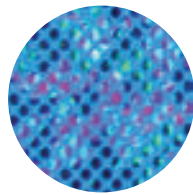
Premium Fabric Upcharge Applies

Metallic

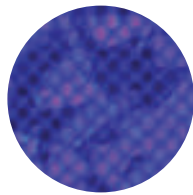
Premium Fabric Upcharge Applies

Infab Corporation's Hologram and Metallic fabrics can be used for any of our aprons, thyroid collars, and all of our covered gloves (premium fabric upcharge applies).

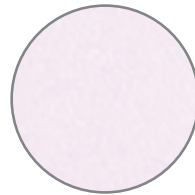
Our Hologram and Metallic fabrics are bright, shiny, fashionable, cleanable, and very durable. For a look that will truly differentiate your apron from the crowd, choose any of these new Infab exclusive fabrics.



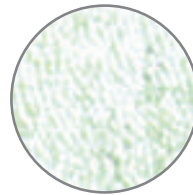
350
Turquoise/Turquoise



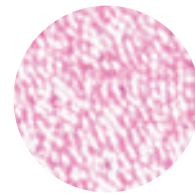
351
Royal/Royal



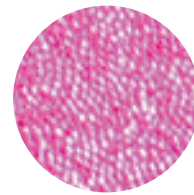
400
Moonstone



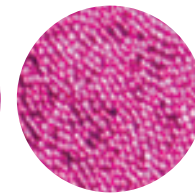
401
New Peridot



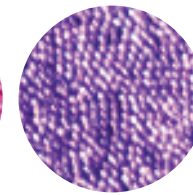
402
Morganite



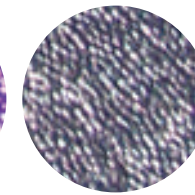
403
Pink Tourmaline



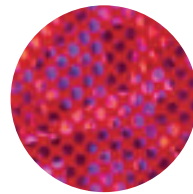
404
Purple Gamet



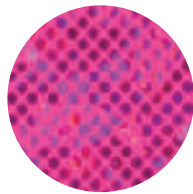
405
Amethyst



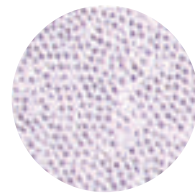
406
Gunmetal



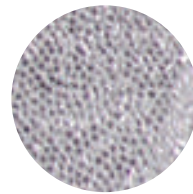
352
Red/Fuchsia



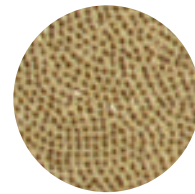
353
Bright Pink/Fuchsia



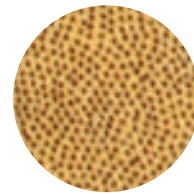
407
Diamond



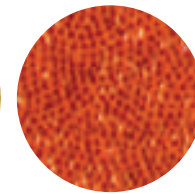
408
Platinum



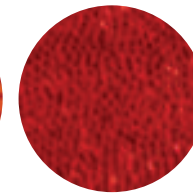
409
El Dorado



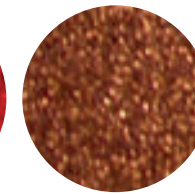
410
Gold



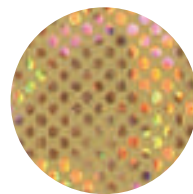
411
Sunstone



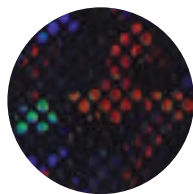
412
Ruby



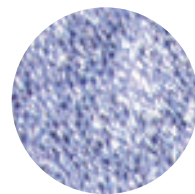
413
Tigers Eye



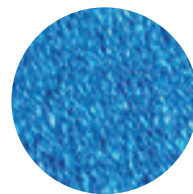
354
Gold/Gold



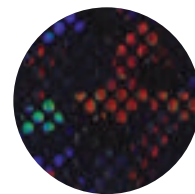
355
Black/Black



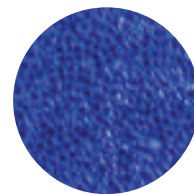
414
Aquamarine



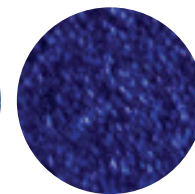
415
Turquoise



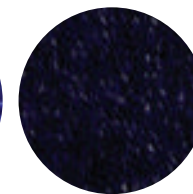
416
Topaz



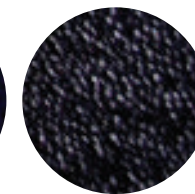
417
Lapis Lazuli



418
Lolite



419
Obsidian



420
Sapphire

Standard Colors

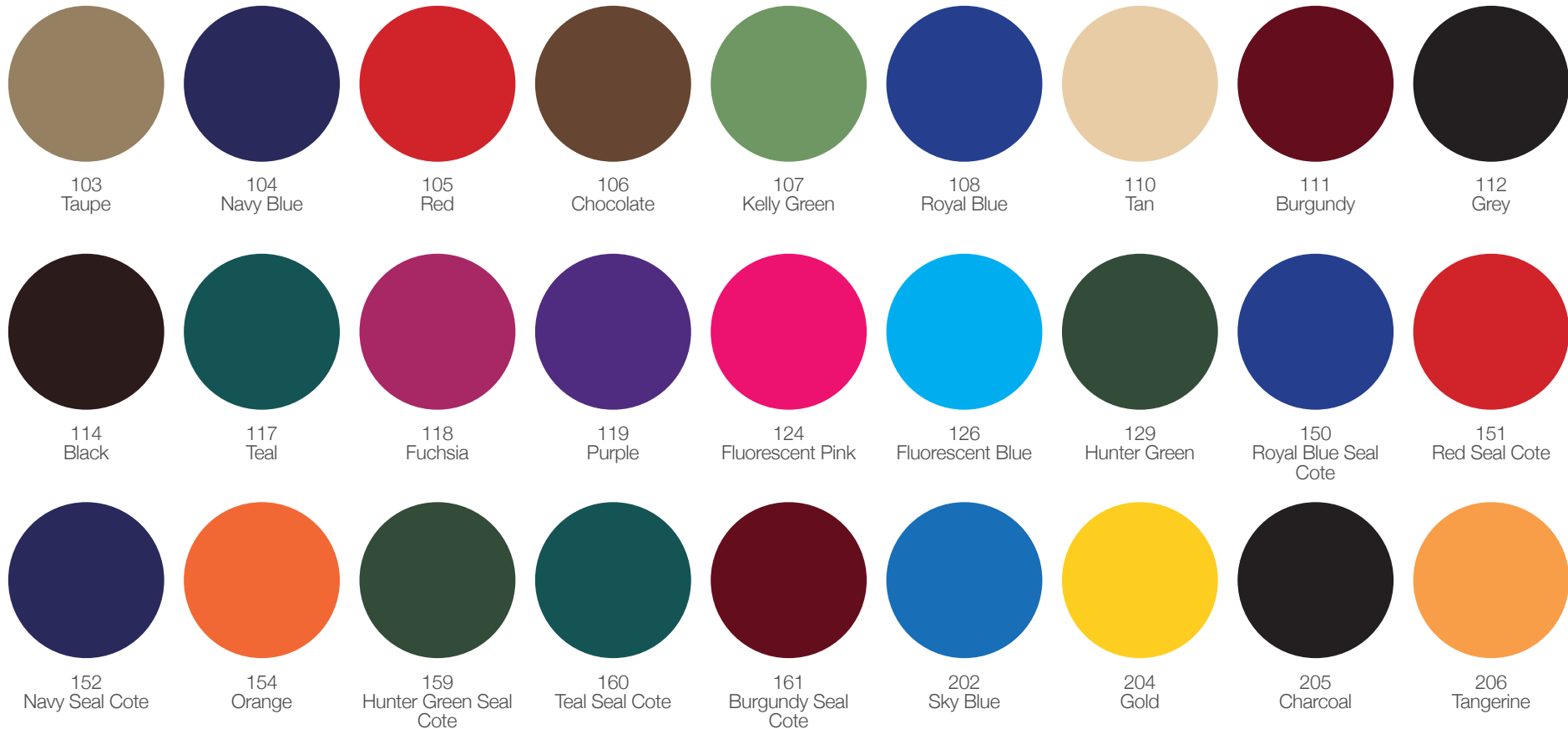
First quality nylon and polyesters, all polyurethane coated on the inside to seal the cloth from any fluid penetration and for ease-of-cleaning. Color-fast dyes won't transfer to your clothing and contain anti-microbial treatment to stay fresh and sanitary for years to come.

A rainbow of different in-stock solid colors and patterns to choose from, all at no additional charge.

Colors and patterns may be added and discontinued at any time. For the most up to date list of Apron Colors, visit www.infabcorp.com

Mix Colors/Patterns and Trims
Create Your Own Unique Look at No Extra Charge

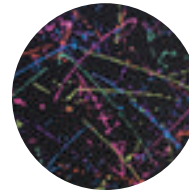
Order by number with outside color first, then inside color then trim color. Example: 169/112/204: Surf Wax outside, Gray inside with Gold edge trim



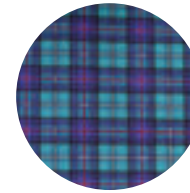
Standard Patterns



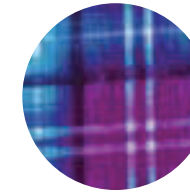
120
Camouflage



140
Splash



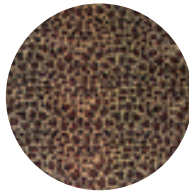
157
Teal Plaid



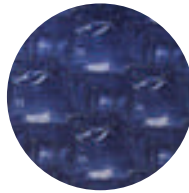
165
Purple Plaid



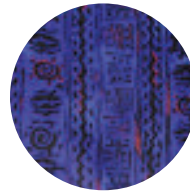
166
Zebra



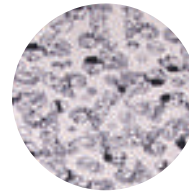
167
Cheetah



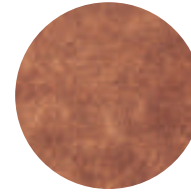
168
New Jeans



169
Surf Wax



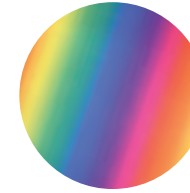
172
Puppies



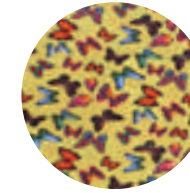
174
Leather



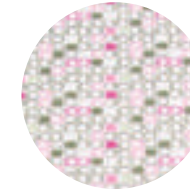
175
Purple Hawaii



176
Rainbow Wave



177
Butterflies



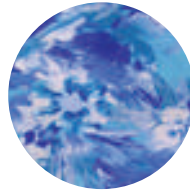
178
Avocado



179
New Gumball



180
Orange Hawaii



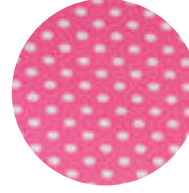
181
Blue Hawaii



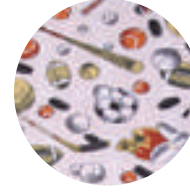
182
Sheeps in Clouds



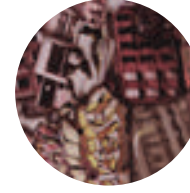
184
Pink Camouflage



185
White Dots on Pink



186
Sports



188
American Graffiti



190
Blue Diamond Ripstop



192
Gray Diamond Ripstop



194
Burgundy Diamond Ripstop



196
Bronze Diamond Ripstop



197
Red Diamond Ripstop



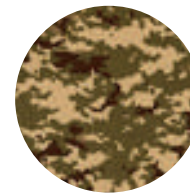
198
Black Diamond Ripstop



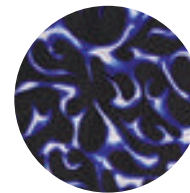
199
Purple Diamond Ripstop



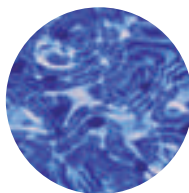
200
Hunter Green Ripstop



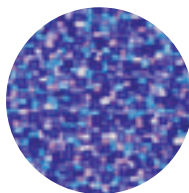
201
Digital Camo



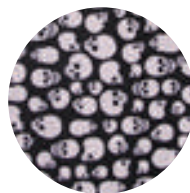
207
Blue Flame



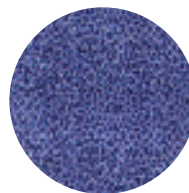
208
Blue Wash



209
Chicklets



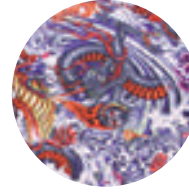
210
Skulls



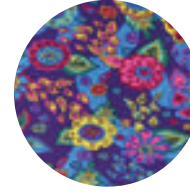
212
Animal Print Blue



215
Worn Grey Jeans



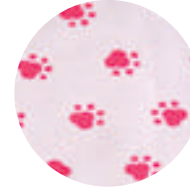
216
Asian



217
Mardi Gras



218
Marimba

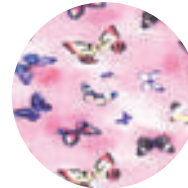


219
Pink Paws

Premium Colors

In addition to our standard colors, Infab offers over **2,500 premium colors**. Choose from any of our premium colors to completely customize your apron.

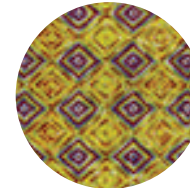
Premium Fabric Upcharge Applies



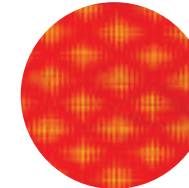
TFX756-33
Pink Butterflies



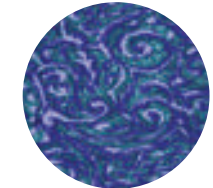
SCP210-59
Frappe Aqua



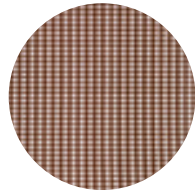
OMN404-68
Diamond Ombre



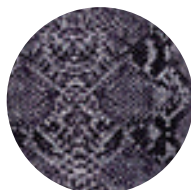
W5280-90
Optic Dot-Bright



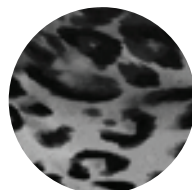
SCP214-42
Swirl- Purple,Green



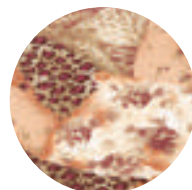
TRP512-65
Gingham- Brown



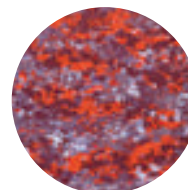
MAY859-08
Anaconda Bright



SCP53-09
Abstract Cat Grey



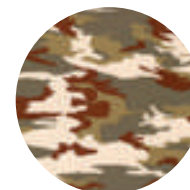
W5308-65
Chamy



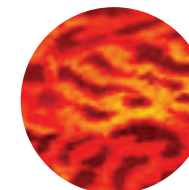
SCP145-95
Fire and Ice



MIR201-55
Blue Camo



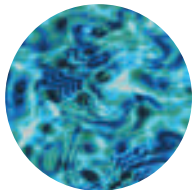
MIR215-15
Regular Camo



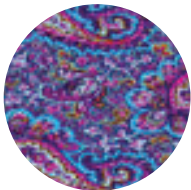
MAY872-29
Tiger



SCP380-33
Wild Cat



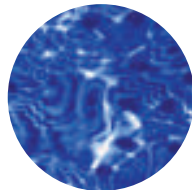
SCP244-85
Splash - Teal,Blue



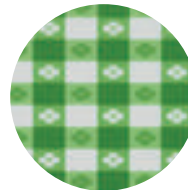
TRM903-84
Peasant Paisley



TFX766-36
Hearts of Color II



SCP244-55
Splash



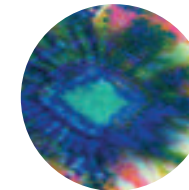
GRA018-11
Pik Nik



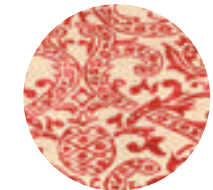
GRA012-17
Funky 60's



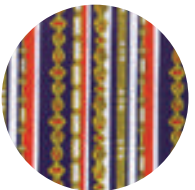
TFX755-31
Burberry Pink



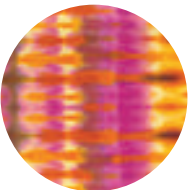
MAY876-55
Tie-Dye



TUK619-93
Tribal



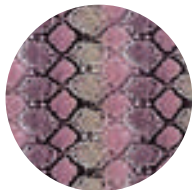
W5311-90
Stripes n Chains



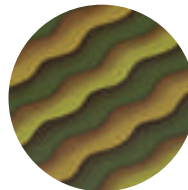
OMN403-73
Plaid Tie Dye



MIR246-34
Sweet Pea



MAY862-30
Diamond Back Soft



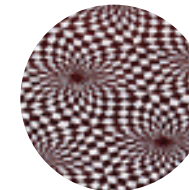
W5323-15
Green Waves



SCP256-32
Multi Color Pattern



MIR272-53
Blue Tropical Flower



W5295-00
Optic Black Checkers



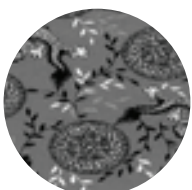
SCP343-55
Blue Stars



TFX719-06
Planets



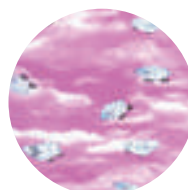
SCP318-34
Stripes



MAY838-03
Dragons on Grey



TRP500-90
Racer Cubes



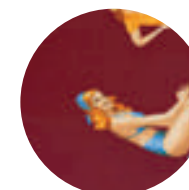
SCP257-42
Sheep and Clouds



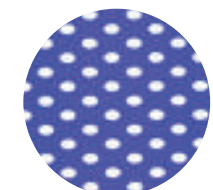
TUK627-09
Casino



TUK632-45
Shapes



MAY892-98
Pin up girl



SCP302-51
Royal Dots

Two piece set for comfort and weight distribution

- Available in Smart Armor lead, lightweight composite, and Greenlite lead-free
- Full overlapping front panels for maximum protection
- Increased airflow
- Genuine VELCRO™ brand closures
- Comfortable shoulder pads
- Double welt pockets
- Belt and buckle closure on skirts
- Skirt hanging straps

Standard configuration

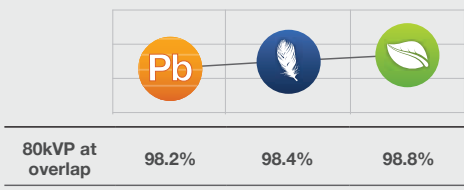
- (1) .25 mm Pb layer each front panel (2 layers when overlapped) providing .50 mm Pb at panel overlap
- (1) layer in back panel providing .25 mm Pb

Direct beam lead equivalency of up to 1.0 mm available at extra charge

PROTECTION

Smart Armor	Regular Lead	Lightweight Composite	Greenlite Lead-Free

ATTENUATION



MODEL NUMBER

MODEL	SIZE (Custom Sizes Available)
VASF-XS	X-Small
VASF-S	Small
VASF-M	Medium
VASF-L	Large
VASF-XL	X-Large
VASF-XXL	XX-Large

Optional Accessories



TCV-S1 Thyroid Collar with Binding



683550 Scrubbles Apron Cleaner



CW Cool Wear Fabric Liner



Built by Hand



"My lead arrived today!! I love it! Much lighter than my old lead.."

- Ashley, End User

HOLOGRAM	METALLIC	EXCLUSIVE	COLORS
STANDARD			
PATTERNS			

Shown in 105 Red
Full Color Chart: Page 48

Two piece set for comfort and weight distribution



Built by Hand

Shown in 117 Teal
Full Color Chart: Page 48

- Available in Smart Armor lead, lightweight composite, and Greenlite lead-free
- Full overlapping front panels for maximum protection
- Increased airflow
- Genuine VELCRO™ brand closures
- Comfortable shoulder pads
- Double welt pockets
- Belt and buckle closure on skirts
- Skirt hanging straps

Standard configuration

- (1) .25 mm Pb layer each front panel (2 layers when overlapped) providing .50 mm Pb at panel overlap
- (1) layer in back panel providing .25 mm Pb

Direct beam lead equivalency of up to 1.0 mm available at extra charge

PROTECTION

Smart Armor	Regular Lead	Lightweight Composite	Greenlite Lead-Free

ATTENUATION

80kVP at overlap	98.2%	98.4%	98.8%

MODEL NUMBER

MODEL	SIZE (Custom Sizes Available)
VASM-S	Small
VASM-M	Medium
VASM-L	Large
VASM-XL	X-Large
VASM-XXL	XX-Large

Optional Accessories



TCV-S1 Thyroid Collar with Binding



683550
Scrubbles Apron Cleaner



CW
Cool Wear Fabric Liner

"No one takes care of us and communicates with us like Infab"
- Shannon, End User

COLORS	HOLOGRAM	METALLIC	EXCLUSIVE
	STANDARD		
	PATTERNS		

Designed for weight distribution, comfort, and ventilation

- Available in Smart Armor lead, lightweight composite, and Greenlite lead-free
- Full overlapping front panels for maximum protection
- Increased airflow
- Genuine VELCRO™ brand closures
- Comfortable shoulder pads
- Double welt pockets

Standard configuration

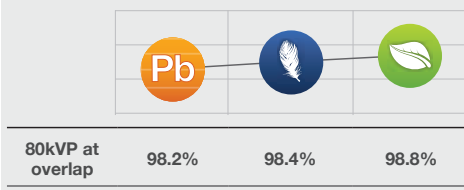
- (1) .25 mm Pb layer each front panel (2 layers when overlapped) providing .50 mm Pb at panel overlap
- (1) layer in back panel providing .25 mm Pb

Direct beam lead equivalency of up to 1.0 mm available at extra charge

PROTECTION

Smart Armor	Regular Lead	Lightweight Composite	Greenlite Lead-Free

ATTENUATION



MODEL NUMBER

MODEL	SIZE (Custom Sizes Available)
VSTF-XS	X-Small
VSTF-S	Small
VSTF-M	Medium
VSTF-L	Large
VSTF-XL	X-Large
VSTF-XXL	XX-Large

Optional Accessories



TCV-S1 Thyroid Collar with Binding



683550 Scrubbles Apron Cleaner



CW Cool Wear Fabric Liner



Built by Hand



"Thank you so much for your prompt responses and for making this process so easy"
- Larry, End User

Shown in 105 Red
Full Color Chart: Page 48

HOLOGRAM	METALLIC	EXCLUSIVE
STANDARD		
PATTERNS		

COLORS

Designed for weight distribution, comfort, and ventilation



Built by Hand

Shown in 117 Teal
Full Color Chart: Page 48

- Available in Smart Armor lead, lightweight composite, and Greenlite lead-free
- Full overlapping front panels for maximum protection
- Increased airflow
- Genuine VELCRO™ brand closures
- Comfortable shoulder pads
- Double welt pockets

Standard configuration

- (1) .25 mm Pb layer each front panel (2 layers when overlapped) providing .50 mm Pb at panel overlap
- (1) layer in back panel providing .25 mm Pb

Direct beam lead equivalency of up to 1.0 mm available at extra charge

PROTECTION

Smart Armor	Regular Lead	Lightweight Composite	Greenlite Lead-Free

ATTENUATION

80kVP at overlap	98.2%	98.4%	98.8%

MODEL NUMBER

MODEL	SIZE (Custom Sizes Available)
VSTM-S	Small
VSTM-M	Medium
VSTM-L	Large
VSTM-XL	X-Large
VSTM-XXL	XX-Large

Optional Accessories



TCV-S1 Thyroid Collar with Binding



683550
Scrubbles Apron Cleaner



CW
Cool Wear Fabric Liner

"You are pleasure to work with both individually and as a Company as whole"
- Wendy, End User

COLORS	HOLOGRAM	METALLIC	EXCLUSIVE
	STANDARD		
	PATTERNS		

Designed for weight distribution, comfort, and ventilation

- Available in Smart Armor lead, lightweight composite, and Greenlite lead-free
- Full overlapping front panels for maximum protection
- Increased airflow
- Genuine VELCRO™ brand closures
- Double welt pockets
- Belt and buckle closure on skirts
- Skirt hanging straps

Standard configuration

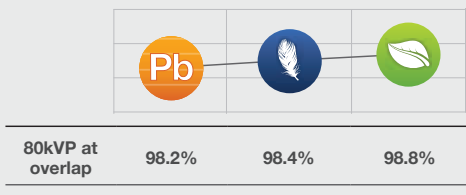
- (1) .25 mm Pb layer each front panel (2 layers when overlapped) providing .50 mm Pb at panel overlap
- (1) layer in back panel providing .25 mm Pb

Direct beam lead equivalency of up to 1.0 mm available at extra charge

PROTECTION

Smart Armor	Regular Lead	Lightweight Composite	Greenlite Lead-Free

ATTENUATION



MODEL NUMBER

MODEL	SIZE (Custom Sizes Available)
SKTF-XS	X-Small
SKTF-S	Small
SKTF-M	Medium
SKTF-L	Large
SKTF-XL	X-Large
SKTF-XXL	XX-Large

Optional Accessories



TCV-S1 Thyroid Collar with Binding



683550 Scrubbles Apron Cleaner



CW Cool Wear Fabric Liner



Built by Hand



HOLOGRAM	METALLIC	EXCLUSIVE
STANDARD		
PATTERNS		

COLORS

Shown in 105 Red
Full Color Chart: Page 48

Designed for weight distribution, comfort, and ventilation

- Available in Smart Armor lead, lightweight composite, and Greenlite lead-free
- Full overlapping front panels for maximum protection
- Increased airflow
- Genuine VELCRO™ brand closures
- Double welt pockets
- Belt and buckle closure on skirts
- Skirt hanging straps

Standard configuration

- (1) .25 mm Pb layer each front panel (2 layers when overlapped) providing .50 mm Pb at panel overlap
- (1) layer in back panel providing .25 mm Pb

Direct beam lead equivalency of up to 1.0 mm available at extra charge



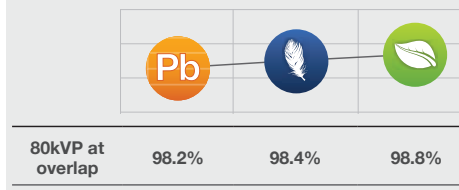
Built by Hand

Shown in 117 Teal
Full Color Chart: Page 48

PROTECTION

Smart Armor	Regular Lead	Lightweight Composite	Greenlite Lead-Free

ATTENUATION



MODEL NUMBER

MODEL	SIZE (Custom Sizes Available)
SKTM-S	Small
SKTM-M	Medium
SKTM-L	Large
SKTM-XL	X-Large
SKTM-XXL	XX-Large

Optional Accessories



TCV-S1 Thyroid Collar with Binding



683550
Scrubbles Apron Cleaner



CW
Cool Wear Fabric Liner

"Your help and excellent customer service makes it a pleasure to do Business with you."
- Debbie, Distributor

COLORS	HOLOGRAM	METALLIC	EXCLUSIVE
	STANDARD		
	PATTERNS		

Criss-cross elastic back for comfortable lumbar support and weight relief

- Available in Smart Armor lead, lightweight composite, and Greenlite lead-free
- Top left shoulder VELCRO™ brand closure
- Solid front panel
- Double welt pockets
- Adjustable skirt belt and VELCRO™ brand closure

Direct beam lead equivalency attenuation of up to 1.0mm available at extra charge

Standard configuration

SKIRT

- (1) .25 mm Pb layer in each front panel (2 layers when overlapped) providing .50 mm Pb at panel overlap
- (1) layer in back panel providing .25mm Pb

VEST

- (2) layer front panel providing .50mm Pb
- (1) layer in back panel providing .25mm Pb

PROTECTION

ATTENUATION

80kVP at overlap	98.2%	98.4%	98.8%

MODEL NUMBER

MODEL	SIZE (Custom Sizes Available)
RVASF-XS	X-Small
RVASF-S	Small
RVASF-M	Medium
RVASF-L	Large
RVASF-XL	X-Large
SKTF-XXL	XX-Large

Optional Accessories



TCV-S1 With Binding



683552 Scrubbies Wipes



APW Axillary Protection Wings



Built by Hand



HOLOGRAM **METALLIC** **EXCLUSIVE**

STANDARD

PATTERNS

COLORS

Shown in 217 Mardi Gras Full Color Chart: Page 48

Criss-cross elastic back for comfortable lumbar support and weight relief



Built by Hand

Shown in 114 Black
Full Color Chart: Page 48

- Available in Smart Armor lead, lightweight composite, and Greenlite lead-free
- Top left shoulder VELCRO™ brand closure
- Solid front panel
- Double welt pockets
- Adjustable skirt belt and VELCRO™ brand closure

Direct beam lead equivalency attenuation of up to 1.0mm available at extra charge

Standard configuration

SKIRT

- (1) .25 mm Pb layer in each front panel (2 layers when overlapped) providing .50 mm Pb at panel overlap
- (1) layer in back panel providing .25mm Pb

VEST

- (2) layer front panel providing .50mm Pb
- (1) layer in back panel providing .25mm Pb

PROTECTION

Smart Armor	Regular Lead	Lightweight Composite	Greenlite Lead-Free

ATTENUATION

80kVP at overlap	98.2%	98.4%	98.8%

MODEL NUMBER

MODEL	SIZE (Custom Sizes Available)
RVSM-S	Small
RVSM-M	Medium
RVSM-L	Large
RVSM-XL	X-Large
RVSM-XXL	XX-Large

Optional Accessories



TCV-S1 With Binding



400002 Thinking Cap



909821 Apron Bag

"Great styles and fabrics"
- Kim K., End User

COLORS	HOLOGRAM	METALLIC	EXCLUSIVE
	STANDARD		
	PATTERNS		

Built-in 6" orthopedic elastic back for lower back support

- Available in Smart Armor lead, lightweight composite, and Greenlite lead-free
- Criss-cross VELCRO™ brand closure
- Double welt pockets

Direct beam lead equivalency attenuation of up to 1.0mm available at extra charge

Standard configuration

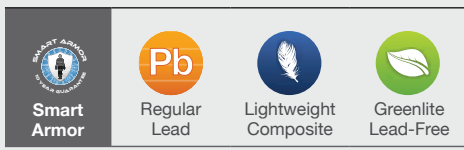
SKIRT

- (1) .25 mm Pb layer in each front panel (2 layers when overlapped) providing .50 mm Pb at panel overlap
- (1) layer in back panel providing .25mm Pb

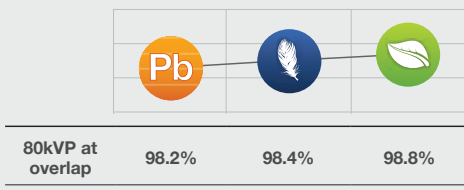
VEST

- (2) layer front panel providing .50mm Pb
- (1) layer in back panel providing .25mm Pb

PROTECTION



ATTENUATION



MODEL NUMBER

MODEL	SIZE (Custom Sizes Available)
EVASF-XS	X-Small
EVASF-S	Small
EVASF-M	Medium
EVASF-L	Large
EVASF-XL	X-Large
EVASF-XXL	XX-Large

Optional Accessories



TCV-S1 With Binding



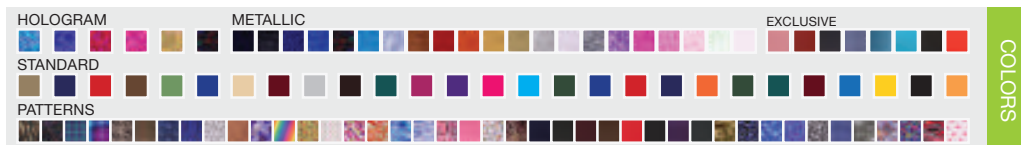
Non-Slip Material



Attached Thyroid Collar



Built by Hand



Shown in **202 Sky Blue**
Full Color Chart: Page 48

Built-in 6" orthopedic elastic back for lower back support

- Available in Smart Armor lead, lightweight composite, and Greenlite lead-free
- Criss-cross VELCRO™ brand closure
- Double welt pockets

Standard configuration

SKIRT

- (1) .25 mm Pb layer in each front panel (2 layers when overlapped) providing .50 mm Pb at panel overlap
- (1) layer in back panel providing .25mm Pb

VEST

- (2) layer front panel providing .50mm Pb
- (1) layer in back panel providing .25mm Pb

Direct beam lead equivalency attenuation of up to 1.0mm available at extra charge



Built by Hand

Shown in 104 Navy
Full Color Chart: Page 48

PROTECTION

Smart Armor	Regular Lead	Lightweight Composite	Greenlite Lead-Free

ATTENUATION

80kVp at overlap	98.2%	98.4%	98.8%

MODEL NUMBER

MODEL	SIZE (Custom Sizes Available)
EVASM-S	Small
EVASM-M	Medium
EVASM-L	Large
EVASM-XL	X-Large
EVASM-XXL	XX-Large

Optional Accessories



TCV-S1 With Binding



Axillary Protection Wings



Scrubbles RX Apron Sanitizer

"Customer service is excellent and we enjoy working with Candi."
- Doug W., Distributor

COLORS	HOLOGRAM	METALLIC	EXCLUSIVE
	STANDARD		
	PATTERNS		

Features 6” wide Black Belt® orthopedic elastic back for lower back support and to lift weight from shoulders

- Available in Smart Armor lead, lightweight composite, and Greenlite lead-free
- Comfortable shoulder pads
- Snap on, fully adjustable belt
- Double welt pockets

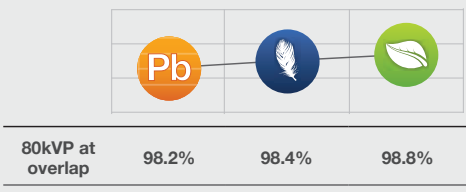
Standard configuration

- (1) .25 mm Pb layer each front panel (2 layers when overlapped) providing .50 mm Pb at panel overlap
- (1) layer in back panel providing .25 mm Pb

Direct beam lead equivalency/attenuation of up to 1.0mm available at extra charge

PROTECTION

ATTENUATION



MODEL NUMBER

MODEL	SIZE (Custom Sizes Available)
LSWF-XS	X-Small
LSWF-S	Small
LSWF-M	Medium
LSWF-L	Large
LSWF-XL	X-Large
LSWF-XXL	XX-Large

Optional Accessories



TCV-S1 With Binding



400002 Thinking Cap



909821 Apron Bag



Built by Hand

Shown in **118 Fuchsia**
Full Color Chart: Page 48



Features 6" wide Black Belt® orthopedic elastic back for lower back support and to lift weight from shoulders

- Available in Smart Armor lead, lightweight composite, and Greenlite lead-free
- Comfortable shoulder pads
- Snap on, fully adjustable belt
- Double welt pockets

Standard configuration

- (1) .25 mm Pb layer each front panel (2 layers when overlapped) providing .50 mm Pb at panel overlap
- (1) layer in back panel providing .25 mm Pb

Direct beam lead equivalency/attenuation of up to 1.0mm available at extra charge



Built by Hand

Shown in 161 Burgundy Seal Cote
Full Color Chart: Page 48

PROTECTION

	Regular Lead	Lightweight Composite	Greenlite Lead-Free
--	--------------	-----------------------	---------------------

ATTENUATION

80kVP at overlap	98.2%	98.4%	98.8%

MODEL NUMBER

MODEL	SIZE (Custom Sizes Available)
LSWM-S	Small
LSWM-M	Medium
LSWM-L	Large
LSWM-XL	X-Large
LSWM-XXL	XX-Large

Optional Accessories



TCV-S1 With Binding



400002 Thinking Cap



CW Cool Wear Fabric Liner

"No one takes care of us and communicates with us like Infab"

- Shannon, End User

COLORS	HOLOGRAM	METALLIC	EXCLUSIVE
	STANDARD		
	PATTERNS		

Inexpensive front and back protection

- Available in Smart Armor lead, lightweight composite, and Greenlite lead-free
- Double welt pockets
- Full overlapping front panels
- Full back coverage
- Side slits for increased mobility

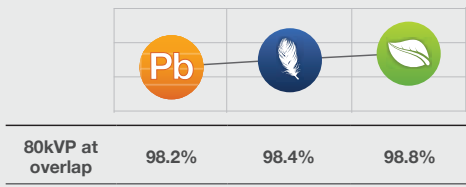
Standard configuration

- (1) .25 mm Pb layer each front panel (2 layers when overlapped) providing .50 mm Pb at panel overlap
- (1) layer in back panel providing .25 mm Pb

Direct beam lead equivalency/attenuation of up to 1.0mm available at extra charge

PROTECTION

ATTENUATION



MODEL NUMBER

MODEL	SIZE (Custom Sizes Available)
FCWF-XS	X-Small
FCWF-S	Small
FCWF-M	Medium
FCWF-L	Large
FCWF-XL	X-Large
FCWF-XXL	XX-Large

Accessories



"I use Infab for most all of my [radiation protection] needs."
- Greg B., Distributor



Built by Hand

Shown in 212 Animal Print Blue
Full Color Chart: Page 48

Inexpensive front and back protection



Built by Hand

Shown in 174 Leather

- Available in Smart Armor lead, lightweight composite, and Greenlite lead-free
- Double welt pockets
- Full overlapping front panels
- Full back coverage
- Side slits for increased mobility

Standard configuration

- (1) .25 mm Pb layer each front panel (2 layers when overlapped) providing .50 mm Pb at panel overlap
- (1) layer in back panel providing .25 mm Pb

Direct beam lead equivalency/attenuation of up to 1.0mm available at extra charge

PROTECTION

<p>Smart Armor</p>	<p>Regular Lead</p>	<p>Lightweight Composite</p>	<p>Greenlite Lead-Free</p>

ATTENUATION

80kVP at overlap	98.2%	98.4%	98.8%

MODEL NUMBER

MODEL	SIZE <i>(Custom Sizes Available)</i>
FCWM-S	Small
FCWM-M	Medium
FCWM-L	Large
FCWM-XL	X-Large
FCWM-XXL	XX-Large

Accessories



"Flexible and competitive with their prices and caring about the environment."
- Erin M., Distributor

COLORS	HOLOGRAM	METALLIC	EXCLUSIVE
	STANDARD		
	PATTERNS		

Solid front panel design with criss cross back

- Available in Smart Armor lead, lightweight composite, and Greenlite lead-free
- Shoulder strap
- 2" wide buckle closures
- Double welt pockets

Standard configuration

- (1) .25 mm Pb layer each front panel (2 layers when overlapped) providing .50 mm Pb at panel overlap
- (1) layer in back panel providing .25 mm Pb

Direct beam lead equivalency/attenuation of up to 1.0mm available at extra charge

PROTECTION

ATTENUATION

80kVP at overlap	98.2%	98.4%	98.8%

MODEL NUMBER

MODEL	SIZE (Custom Sizes Available)
MWAF-XS	X-Small
MWAF-S	Small
MWAF-M	Medium
MWAF-L	Large
MWAF-XL	X-Large
MWAF-XXL	XX-Large



Optional Accessories



Built by Hand

Shown in 119 Purple
Full Color Chart: Page 48

HOLOGRAM **METALLIC** **EXCLUSIVE**

STANDARD **PATTERNS**

COLORS

Solid front panel design with criss cross back



Built by Hand

Shown in 178 Avocado
Full Color Chart: Page 48

- Available in Smart Armor lead, lightweight composite, and Greenlite lead-free
- Shoulder strap
- 2" wide buckle closures
- Double welt pockets

Standard configuration

- (1) .25 mm Pb layer each front panel (2 layers when overlapped) providing .50 mm Pb at panel overlap
- (1) layer in back panel providing .25 mm Pb

Direct beam lead equivalency/attenuation of up to 1.0mm available at extra charge

PROTECTION

<p>Smart Armor</p>	<p>Regular Lead</p>	<p>Lightweight Composite</p>	<p>Greenlite Lead-Free</p>

ATTENUATION

80kVP at overlap	98.2%	98.4%	98.8%

"Excellent customer service"
- Paul F., End User

MODEL NUMBER

MODEL	SIZE (Custom Sizes Available)
FCWM-S	Small
FCWM-M	Medium
FCWM-L	Large
FCWM-XL	X-Large
FCWM-XXL	XX-Large

Optional Accessories



COLORS	HOLOGRAM	METALLIC	EXCLUSIVE
	STANDARD		
	PATTERNS		

Distributes weight between waist and shoulders

- Available in Smart Armor lead, lightweight composite, and Greenlite lead-free
- Comfortable shoulder pads
- Double welt pockets

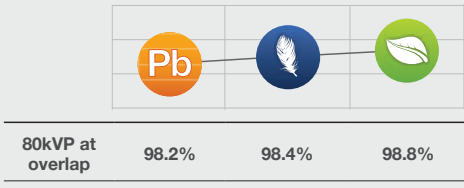
Standard configuration

- (2) layers in front panel providing .50mm Pb

Direct beam lead equivalency/attenuation of up to 1.0mm available at extra charge

PROTECTION

ATTENUATION



MODEL NUMBER

MODEL	SIZE (Custom Sizes Available)
AWCF-XS	X-Small
AWCF-S	Small
AWCF-M	Medium
AWCF-L	Large
AWCF-XL	X-Large
AWCF-XXL	XX-Large

Optional Accessories



TCV-S1 With Binding



Cool Wear Fabric Liner



Axillary Protection Wings



Built by Hand



Shown in 126 Fluorescent Blue
Full Color Chart: Page 48

Distributes weight between waist and shoulders



Built by Hand



- Available in Smart Armor lead, lightweight composite, and Greenlite lead-free
- Comfortable shoulder pads
- Double welt pockets

Standard configuration

- (2) layers in front panel providing .50mm Pb

Direct beam lead equivalency/attenuation of up to 1.0mm available at extra charge

PROTECTION

Smart Armor	Regular Lead	Lightweight Composite	Greenlite Lead-Free

ATTENUATION

80kVP at overlap	98.2%	98.4%	98.8%

MODEL NUMBER

MODEL	SIZE (Custom Sizes Available)
AWCM-S	Small
AWCM-M	Medium
AWCM-L	Large
AWCM-XL	X-Large
AWCM-XXL	XX-Large

Optional Accessories



TCV-S1 With Binding



Thinking Cap



Scrubles Apron Cleaner

"Flexible and competitive with their prices and caring about the environment."
- Erin M., Distributor

Shown in
197 Red Diamond Ripstop
Full Color Chart: Page 48

COLORS	HOLOGRAM	METALLIC	EXCLUSIVE
	STANDARD		
	PATTERNS		

Built-in orthopedic elastic panels for lower back support and comfort

- Available in Smart Armor lead, lightweight composite, and Greenlite lead-free
- Comfortable shoulder pads
- Double welt pockets

Standard configuration

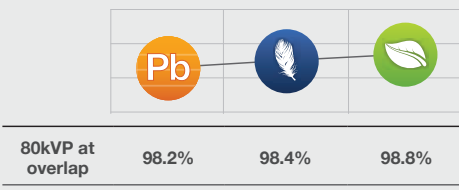
- (2) layers in front panel providing .50mm Pb

Direct beam lead equivalency/attenuation of up to 1.0mm available at extra charge

PROTECTION

Smart Armor	Regular Lead	Lightweight Composite	Greenlite Lead-Free

ATTENUATION



MODEL NUMBER

MODEL	SIZE (Custom Sizes Available)
AWCF-XS	X-Small
AWCF-S	Small
AWCF-M	Medium
AWCF-L	Large
AWCF-XL	X-Large
AWCF-XXL	XX-Large

Optional Accessories



TCV-S1 With Binding



Non-Slip Material



Apron Bag

HOLOGRAM	METALLIC	EXCLUSIVE
STANDARD		
PATTERNS		

COLORS



Built by Hand

Shown in 140 Splash
Full Color Chart: Page 48

Built-in orthopedic elastic panels for lower back support and comfort



Built by Hand



- Available in Smart Armor lead, lightweight composite, and Greenlite lead-free
- Comfortable shoulder pads
- Double welt pockets

Standard configuration

- (2) layers in front panel providing .50mm Pb
- Direct beam lead equivalency/attenuation of up to 1.0mm available at extra charge*

PROTECTION

	Regular Lead	Lightweight Composite	Greenlite Lead-Free
--	--------------	-----------------------	---------------------

ATTENUATION

80kVp at overlap	98.2%	98.4%	98.8%

MODEL NUMBER

MODEL	SIZE (Custom Sizes Available)
EBAM-S	Small
EBAM-M	Medium
EBAM-L	Large
EBAM-XL	X-Large
EBAM-XXL	XX-Large

Optional Accessories



TCV-S1 With Binding



Scrubbles Apron Cleaner



Cool Wear Fabric Liner

"Excellent customer service"
- Paul F., End User

COLORS	HOLOGRAM	METALLIC	EXCLUSIVE
	STANDARD		
	PATTERNS		

Shown in 114 Black
Full Color Chart: Page 48

6" wide Black Belt® to support lower back and remove weight from shoulders

- Available in Smart Armor lead, lightweight composite, and Greenlite lead-free
- Comfortable shoulder pads
- Buckles in front
- Double welt pockets

Standard configuration

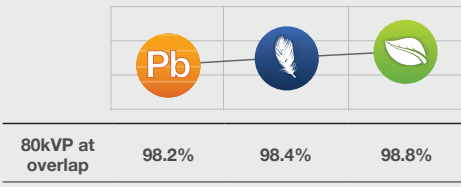
- (2) layers in front panel providing .50mm Pb

Direct beam lead equivalency/attenuation of up to 1.0mm available at extra charge

PROTECTION

Smart Armor	Regular Lead	Lightweight Composite	Greenlite Lead-Free

ATTENUATION



MODEL NUMBER

MODEL	SIZE (Custom Sizes Available)
LSFF-XS	X-Small
LSFF-S	Small
LSFF-M	Medium
LSFF-L	Large
LSFF-XL	X-Large
LSFF-XXL	XX-Large

Optional Accessories



TCV-S1 With Binding



Non-Slip Material



Attached Thyroid Collar

"My experience with Infab has been...excellent products, terrific support, well priced, and satisfied customers"
- Chuck J., Distributor

HOLOGRAM	METALLIC	EXCLUSIVE	COLORS
PATTERNS			



Built by Hand

Shown in **124 Fluorescent Pink**
Full Color Chart: Page 48

6" wide Black Belt® to support lower back and remove weight from shoulders



Built by Hand

Shown in 120 Camouflage
Full Color Chart: Page 48

- Available in Smart Armor lead, lightweight composite, and Greenlite lead-free
- Comfortable shoulder pads
- Buckles in front
- Double welt pockets

Standard configuration

- (2) layers in front panel providing .50mm Pb

Direct beam lead equivalency/attenuation of up to 1.0mm available at extra charge

PROTECTION

Smart Armor	Regular Lead	Lightweight Composite	Greenlite Lead-Free

ATTENUATION

80kVP at overlap	98.2%	98.4%	98.8%

MODEL NUMBER

MODEL	SIZE (Custom Sizes Available)
LSFM-S	Small
LSFM-M	Medium
LSFM-L	Large
LSFM-XL	X-Large
LSFM-XXL	XX-Large

Optional Accessories



TCV-S1 With Binding



Axillary Protection Wings



Scrubbles RX Apron Sanitizer

"Flexible and competitive with their prices and caring about the environment."
- Erin M., Distributor

COLORS	HOLOGRAM	METALLIC	EXCLUSIVE
	STANDARD		
	PATTERNS		

Quick and easy, fully adjustable, alternative to tie straps

- Available in Smart Armor lead, lightweight composite, and Greenlite lead-free
- Comfortable shoulder pads
- Criss-cross straps with 2" belt buckles
- Double welt pockets

Standard configuration

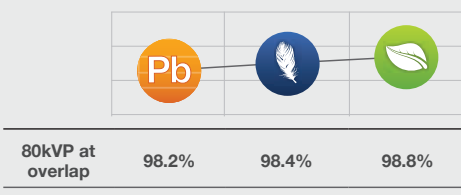
- (2) layers in front panel providing .50mm Pb

Direct beam lead equivalency/attenuation of up to 1.0mm available at extra charge

PROTECTION

Smart Armor	Regular Lead	Lightweight Composite	Greenlite Lead-Free

ATTENUATION



MODEL NUMBER

MODEL	SIZE (Custom Sizes Available)
WBTF-XS	X-Small
WBTF-S	Small
WBTF-M	Medium
WBTF-L	Large
WBTF-XL	X-Large
WBTF-XXL	XX-Large

Optional Accessories



TCV-S1 With Binding



Cool Wear Fabric Liner



Axillary Protection Wings

HOLOGRAM	METALLIC	EXCLUSIVE	COLORS
STANDARD			
PATTERNS			



Built by Hand

Shown in 117 Teal
Full Color Chart: Page 48

Quick and easy, fully adjustable, alternative to tie straps



Built by Hand

Shown in **129 Hunter Green**
Full Color Chart: Page 48

- Available in Smart Armor lead, lightweight composite, and Greenlite lead-free
- Comfortable shoulder pads
- Criss-cross straps with 2" belt buckles
- Double welt pockets

Standard configuration

- (2) layers in front panel providing .50mm Pb

Direct beam lead equivalency/attenuation of up to 1.0mm available at extra charge

PROTECTION			
	Regular Lead	Lightweight Composite	Greenlite Lead-Free
ATTENUATION			
80kVp at overlap	98.2%	98.4%	98.8%

MODEL NUMBER	
MODEL	SIZE (Custom Sizes Available)
LSFM-S	Small
LSFM-M	Medium
LSFM-L	Large
LSFM-XL	X-Large
LSFM-XXL	XX-Large

Optional Accessories



TCV-S1 With Binding



Thinking Cap



Scrubbles Apron Cleaner

COLORS	HOLOGRAM										METALLIC										EXCLUSIVE									
	[Color swatches for HOLOGRAM, METALLIC, and EXCLUSIVE categories]																													
	PATTERNS																													
	[Color swatches for PATTERNS category]																													

Loads of features at an economical price

- Available in Smart Armor lead, lightweight composite, and Greenlite lead-free
- Comfortable shoulder pads
- Attaches in front with tie straps
- Criss-cross tie straps

Standard configuration

- (2) layers in front panel providing .50mm Pb

Direct beam lead equivalency/attenuation of up to 1.0mm available at extra charge

PROTECTION

ATTENUATION

80kVP at overlap	Regular Lead (Pb)	Lightweight Composite	Greenlite Lead-Free
	98.2%	98.4%	98.8%

MODEL NUMBER

MODEL	SIZE (Custom Sizes Available)
SPLF-XS	X-Small
SPLF-S	Small
SPLF-M	Medium
SPLF-L	Large
SPLF-XL	X-Large
SPLF-XXL	XX-Large

Optional Accessories



TCV-S1 With Binding



Non-Slip Material



Apron Bag



Built by Hand

Shown in 175 Purple Hawaii
Full Color Chart: Page 48

HOLOGRAM	METALLIC	EXCLUSIVE
[Color swatches]	[Color swatches]	[Color swatches]
STANDARD	[Color swatches]	[Color swatches]
PATTERNS	[Pattern swatches]	[Pattern swatches]

COLORS



Loads of features at an economical price



Built by Hand

Shown in **151 Red Seal Cote**
Full Color Chart: Page 48

- Available in Smart Armor lead, lightweight composite, and Greenlite lead-free
- Comfortable shoulder pads
- Attaches in front with tie straps
- Criss-cross tie straps

Standard configuration

- (2) layers in front panel providing .50mm Pb
- Direct beam lead equivalency/attenuation of up to 1.0mm available at extra charge*

PROTECTION

 Smart Armor	 Pb Regular Lead	 Lightweight Composite	 Greenlite Lead-Free

ATTENUATION

	 Pb		
80kVP at overlap	98.2%	98.4%	98.8%

MODEL NUMBER

MODEL	SIZE (Custom Sizes Available)
SPLM-S	Small
SPLM-M	Medium
SPLM-L	Large
SPLM-XL	X-Large
SPLM-XXL	XX-Large

Optional Accessories



TCV-S1 With Binding



Scrubbles Apron Cleaner



Cool Wear Fabric Liner

"Flexible and competitive with their prices and caring about the environment."
- Erin M., Distributor

COLORS	HOLOGRAM	METALLIC	EXCLUSIVE
	STANDARD		
	PATTERNS		

Designed to be removed without breaking sterile field

- Available in Smart Armor lead, lightweight composite, and Greenlite lead-free
- No arm holes for easy drop from doctor
- Comfortable shoulder pads
- Attaches in front with VELCRO™ brand straps
- Double welt pocket

Standard configuration

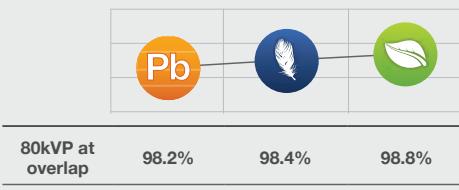
- (2) layers in front panel providing .50mm Pb

Direct beam lead equivalency/attenuation of up to 1.0mm available at extra charge

PROTECTION

Smart Armor	Regular Lead	Lightweight Composite	Greenlite Lead-Free

ATTENUATION



MODEL NUMBER

MODEL	SIZE (Custom Sizes Available)
SDOF-XS	X-Small
SDOF-S	Small
SDOF-M	Medium
SDOF-L	Large
SDOF-XL	X-Large
SDOF-XXL	XX-Large

Optional Accessories

Scrubbles Apron Cleaner	TCV-S1 With Binding	Axillary Protection Wings

"Light weight, well priced, good construction, good warranty"
- Scott H., End User

HOLOGRAM	METALLIC	EXCLUSIVE	COLORS
STANDARD			
PATTERNS			



Built by Hand

Shown in **129 Hunter Green**
Full Color Chart: Page 48

Designed to be removed without breaking sterile field



Built by Hand

Shown in **Custom Color**
Full Color Chart: Page 48

- Available in Smart Armor lead, lightweight composite, and Greenlite lead-free
- No arm holes for easy drop from doctor
- Comfortable shoulder pads
- Attaches in front with VELCRO™ brand straps
- Double welt pocket

Standard configuration

- (2) layers in front panel providing .50mm Pb

Direct beam lead equivalency/attenuation of up to 1.0mm available at extra charge

PROTECTION

<p>Smart Armor</p>	<p>Pb Regular Lead</p>	<p>Lightweight Composite</p>	<p>Greenlite Lead-Free</p>

ATTENUATION

80kVP at overlap	98.2%	98.4%	98.8%

MODEL NUMBER

MODEL	SIZE (Custom Sizes Available)
SDOM-S	Small
SDOM-M	Medium
SDOM-L	Large
SDOM-XL	X-Large
SDOM-XXL	XX-Large

Optional Accessories



TCV-S1 With Binding



Non-Slip Material



Scrubber Wipes

"Excellent customer service"
- Paul F., End User

COLORS	HOLOGRAM	METALLIC	EXCLUSIVE
	STANDARD		
	PATTERNS		

Easy On / Easy Off Convenience

- Available in Smart Armor lead, lightweight composite, and Greenlite lead-free
- Comfortable shoulder pads
- Double welt pocket
- Attaches in front with VELCRO™ brand straps

Standard configuration

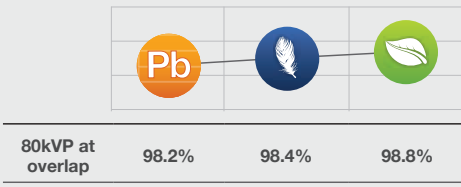
- (2) layers in front panel providing .50mm Pb

Direct beam lead equivalency/attenuation of up to 1.0mm available at extra charge

PROTECTION

Smart Armor	Regular Lead	Lightweight Composite	Greenlite Lead-Free

ATTENUATION



MODEL NUMBER

MODEL	SIZE (Custom Sizes Available)
CBVF-XS	X-Small
CBVF-S	Small
CBVF-M	Medium
CBVF-L	Large
CBVF-XL	X-Large
CBVF-XXL	XX-Large

Optional Accessories



TCV-S1 With Binding



Cool Wear Fabric Liner



Axillary Protection Wings

"I use Infab for most all of my [radiation protection] needs."

- Greg B., Distributor



Built by Hand

HOLOGRAM	METALLIC	EXCLUSIVE
STANDARD		
PATTERNS		

COLORS



Shown in 124 Fluorescent Pink
Full Color Chart: Page 48

Easy On / Easy Off Convenience



Built by Hand

Shown in **180 Orange Hawaii**
Full Color Chart: Page 48

- Available in Smart Armor lead, lightweight composite, and Greenlite lead-free
- Comfortable shoulder pads
- Double welt pocket
- Attaches in front with VELCRO™ brand straps

Standard configuration

- (2) layers in front panel providing .50mm Pb

Direct beam lead equivalency/attenuation of up to 1.0mm available at extra charge

PROTECTION			
	Regular Lead	Lightweight Composite	Greenlite Lead-Free
ATTENUATION			
80kVP at overlap	98.2%	98.4%	98.8%

MODEL NUMBER	
MODEL	SIZE (Custom Sizes Available)
CBVM-S	Small
CBVM-M	Medium
CBVM-L	Large
CBVM-XL	X-Large
CBVM-XXL	XX-Large

Optional Accessories



TCV-S1 With Binding



Thinking Cap



Scrubbles Apron Cleaner

"Flexible and competitive with their prices and caring about the environment."
- Erin M., Distributor

COLORS	HOLOGRAM	METALLIC	EXCLUSIVE
	PATTERNS		

Quick and easy, fully adjustable alternative to tie straps

- Available in Smart Armor lead, lightweight composite, and Greenlite lead-free
- Comfortable shoulder pads
- Criss-cross straps with 1" belt buckles
- Double welt pockets

Standard configuration

- (2) layers in front panel providing .50mm Pb

Direct beam lead equivalency/attenuation of up to 1.0mm available at extra charge

PROTECTION

Smart Armor	Regular Lead	Lightweight Composite	Greenlite Lead-Free

ATTENUATION

80kVP at overlap	98.2%	98.4%	98.8%

MODEL NUMBER

MODEL	SIZE (Custom Sizes Available)
SBCF-XS	X-Small
SBCF-S	Small
SBCF-M	Medium
SBCF-L	Large
SBCF-XL	X-Large
SBCF-XXL	XX-Large

Optional Accessories



TCV-S1 With Binding



Non-Slip Material



Apron Bag



Built by Hand

HOLOGRAM	METALLIC	EXCLUSIVE	COLORS
STANDARD			
PATTERNS			



Shown in 119 New Gumball
Full Color Chart: Page 48



Built by Hand

Shown in **129 Hunter Green**
Full Color Chart: Page 48

Quick and easy, fully adjustable alternative to tie straps

- Available in Smart Armor lead, lightweight composite, and Greenlite lead-free
- Comfortable shoulder pads
- Criss-cross straps with 1" belt buckles
- Double welt pockets

Standard configuration

- (2) layers in front panel providing .50mm Pb

Direct beam lead equivalency/attenuation of up to 1.0mm available at extra charge

PROTECTION

<p>Smart Armor</p>	<p>Regular Lead</p>	<p>Lightweight Composite</p>	<p>Greenlite Lead-Free</p>

ATTENUATION

80kVP at overlap	98.2%	98.4%	98.8%

MODEL NUMBER

MODEL	SIZE <i>(Custom Sizes Available)</i>
SBCM-S	Small
SBCM-M	Medium
SBCM-L	Large
SBCM-XL	X-Large
SBCM-XXL	XX-Large

Optional Accessories



TCV-S1 With Binding



Scrubbles Apron Cleaner



Cool Wear Fabric Liner

"Excellent customer service"
- Paul F., End User

COLORS	HOLOGRAM	METALLIC	EXCLUSIVE
	STANDARD		
	PATTERNS		

Features shoulder release tabs for quick drop off without breaking sterile field

- Available in Smart Armor lead, lightweight composite, and Greenlite lead-free
- VELCRO™ brand closures at top of both shoulders
- Back attaches with one VELCRO™ brand strap
- Double welt pocket

Standard configuration

- (2) layers in front panel providing .50mm Pb

Direct beam lead equivalency/attenuation of up to 1.0mm available at extra charge

PROTECTION

Smart Armor **Regular Lead (Pb)** **Lightweight Composite** **Greenlite Lead-Free**

ATTENUATION

	Pb		
80kVP at overlap	98.2%	98.4%	98.8%

MODEL NUMBER

MODEL	SIZE (Custom Sizes Available)
SDAF-XS	X-Small
SDAF-S	Small
SDAF-M	Medium
SDAF-L	Large
SDAF-XL	X-Large
SDAF-XXL	XX-Large

Optional Accessories

TCV-S1 With Binding

Cool Wear Fabric Liner (CW)

Axillary Protection Wings

"I use Infab for most all of my [radiation protection] needs."
 - Greg B., Distributor



Built by Hand

HOLOGRAM	METALLIC	EXCLUSIVE
STANDARD		
PATTERNS		

COLORS



Shown in **185 White Dots on Pink**
 Full Color Chart: Page 48

Features shoulder release tabs for quick drop off without breaking sterile field



Built by Hand

Shown in **140 Splash**
Full Color Chart: Page 48

- Available in Smart Armor lead, lightweight composite, and Greenlite lead-free
- VELCRO™ brand closures at top of both shoulders
- Back attaches with one VELCRO™ brand strap
- Double welt pocket

Standard configuration

- (2) layers in front panel providing .50mm Pb

Direct beam lead equivalency/attenuation of up to 1.0mm available at extra charge

PROTECTION

 Smart Armor	 Regular Lead	 Lightweight Composite	 Greenlite Lead-Free

ATTENUATION

80kVP at overlap	98.2%	98.4%	98.8%

MODEL NUMBER

MODEL	SIZE <i>(Custom Sizes Available)</i>
SDAM-S	Small
SDAM-M	Medium
SDAM-L	Large
SDAM-XL	X-Large
SDAM-XXL	XX-Large

Optional Accessories



TCV-S1 With Binding



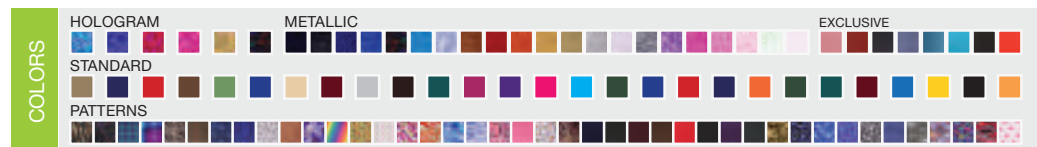
Thinking Cap



Scrubbles Apron Cleaner

"Flexible and competitive with their prices and caring about the environment."

- Erin M., Distributor



Split front panel for protection and comfort while seated

- Full overlapping front panels for maximum protection
- Increased airflow
- Genuine VELCRO® brand closures
- Comfortable shoulder pads
- Double welt pockets
- Belt & Buckle closure on skirts
- Skirt hanging straps

Standard configuration

- (2) layers in front panel providing .50mm Pb

Direct beam lead equivalency/attenuation of up to 1.0mm available at extra charge

PROTECTION

ATTENUATION

80kVP at overlap	98.2%	98.4%	98.8%

MODEL NUMBER

MODEL	SIZE (Custom Sizes Available)
TFAM-XS	X-Small
TFAM-S	Small
TFAM-M	Medium
TFAM-L	Large
TFAM-XL	X-Large
TFAM-XXL	XX-Large

Optional Accessories



Shown in 181 Blue Hawaii
Full Color Chart: Page 48

COLORS

HOLOGRAM	METALLIC	EXCLUSIVE
STANDARD		
PATTERNS		



Designed specifically for use during pregnancy

The Infab Maternity apron is available in both Front Protection and Full wraparound models. All the features of our standard line of protective aprons, but with a separate added panel to protect the critical areas. Designed as a "one size fits all" with plenty of room for expansion. Always consult your Radiation Safety Officer to discuss the dangers & effects of radiation exposure during pregnancy.

MAT-FW Standard configuration

- (2) layers in front panel providing .50mm Pb *Direct beam lead equivalency/attenuation of up to 1.0mm available at extra charge*

MAT-S1 Standard configuration

- (1) .25 mm Pb layer each front panel (2 layers when overlapped) providing .50 mm Pb at panel overlap
 - (1) layer in back panel providing .25 mm Pb
- Direct beam lead equivalency/attenuation of up to 1.0mm available at extra charge*

PROTECTION

Smart Armor	Regular Lead	Lightweight Composite	Greenlite Lead-Free

ATTENUATION

80kVP at overlap	98.2%	98.4%	98.8%

MODEL NUMBERS

FRONT PROTECTION

MODEL	SIZE (Custom Sizes Available)
MAT-FW-S	Small Front Protection
MAT-FW-M	Medium Front Protection
MAT-FW-L	Large Front Protection
MAT-FW--XL	X-Large Front Protection
MAT-FW--XXL	XX-Large Front Protection

FULL PROTECTION

MODEL	SIZE (Custom Sizes Available)
MAT-S1-S	Small Full Protection
MAT-S1-M	Medium Full Protection
MAT-S1-L	Large Full Protection
MAT-S1--XL	X-Large Full Protection
MAT-S1--XXL	XX-Large Full Protection



Built by Hand

"Light weight, well priced, good construction, good warranty"
- Scott H., End User

Optional Accessories



Thinking Cap



Scrubbles Apron Cleaner

Shown in 119 Purple
Full Color Chart: Page 48

COLORS	HOLOGRAM	METALLIC	EXCLUSIVE
	STANDARD		
	PATTERNS		

1. **PRICING, DELIVERY AND PAYMENT.** The prices for Product delivered under this Order do not include customs charges or duties, or sales, use, excise or similar taxes, or special packaging, or transportation, rigging, drayage, insurance charges and other costs associated with the delivery of Product to the destinations specified by the Customer unless specifically set out on the invoice as individual line items. Therefore Customer will pay directly to Seller ("Seller"), in addition to the prices specified in this Order, any amount set forth on Seller's invoices for customs charges, duties and/or taxes (or provide applicable tax exemption certificates acceptable to the taxing authorities) and special packaging costs, and shall pay directly to the involved carrier(s) all such delivery related costs. All licenses or certificates required for import or export of the Product shall be the responsibility of and obtained at the cost of Customer. Seller's terms are cash upon delivery, unless otherwise set forth in a distribution or reseller agreement. If credit terms are approved by Seller, Customer shall pay all invoices net thirty (30) days after date of shipment. If payment is not made when due, Customer shall be assessed a late charge equal to one and one-half percent (1-1/2%) of the past due balance for each month or partial month following the due date. Additionally, at sellers discretion, all discounts shall be removed and any amounts due shall be the current list price of such items, regardless of any other agreement or discount offered. All deliveries shall be made F.O.B. common carrier, Seller's plant. Title and risk of loss or damage will transfer from Seller to Customer upon delivery of goods at the F.O.B. point. Customer shall notify Seller, in writing, within one (1) calendar day after delivery, of any claimed shortages, damage or of rejection of the delivery. Sufficient detail to establish grounds shall be included in any rejection.

2. **PRODUCT SAMPLES.** Product samples will be provided to licensed distributors of Seller's product. Upon termination of a distribution arrangement, distributor shall return to Seller, at distributors expense, all samples previously provided to distributor by Seller in resalable as new condition. For any goods not returned in accordance with the above, Distributor will be invoiced for sample product at the same discount established for distributor for production goods. If invoice is not paid within 10 days of receipt, all discounts will be cancelled and prices for samples will revert to full List Price.

3. **SECURITY INTEREST.** Seller reserves, until full payment is received, a Purchase Money Security Interest in each Product Unit and the proceeds of any sale thereof. A copy of this Order may be filed as a Financing Statement with the appropriate state authorities to perfect the security interest of Seller.

4. **CANCELLATION OF PRODUCT.** Customer hereby acknowledges and agrees that all Product is custom manufactured for each individual Customer and once production has commenced there can be no cancellation of orders.

5. **TERMINATION.** This Order may be terminated by either party at any time: (a) if the other party has breached any material provision contained in this Order and has not cured the breach within thirty (30) days of receipt of written notice of the breach; or (b) if the other party petitions for relief under the Bankruptcy Act, if a receiver is appointed to conduct its business, if its makes an assignment for the benefit of creditors or if an involuntary bankruptcy petition is brought against it and has not been discharged within 30 days of date brought. Seller termination of this Order shall be without prejudice to any other remedies Seller may have. In the event Seller terminates this Order pursuant to Article 4, in addition to any other remedies available to Seller, Customer shall be obligated to pay for all Product shipped and shall accept delivery of and pay for all Product on order as of the date of termination. Customer's obligation to pay all charges accrued as of the termination hereof shall survive such termination.

6. **GENERAL PROVISIONS.** These terms and conditions shall supersede all terms and conditions printed or implied on any purchase order issued by Customer. No other terms or conditions shall be binding upon Customer or Seller unless said terms and conditions are specifically accepted in writing by Customer and Seller. The failure of Customer or Seller to enforce at any time or for any period of time any of the provisions of this Order shall not constitute a waiver of such provisions. Seller shall not be liable for delays or failure to ship for causes beyond Seller's control, affecting it or its suppliers, including, in part: natural disasters; war; Customer's conduct; labor unrest; riot; governmental interference; unavailability or shortage of labor, materials, fuel or power through customary means at normal rates; failure or destruction of plant or equipment arising from any cause whatsoever; or failure of transportation. If any provision of this Order should be determined to be unenforceable or illegal, it shall be deemed severable from the other provisions, which shall remain valid and enforceable. The validity, performance and construction of this Order shall be governed by the laws of the state of California. Customer agrees to accept venue in, and accept the exclusive jurisdiction of, the courts sitting in the state of California. Any disputes arising out of the performance of this Order shall be settled in accordance with the rules of the American Arbitration Association. The arbitrator may award all costs of dispute resolution, including attorneys' fees, to the prevailing party. Seller agrees that the Product to be furnished under this Order

was produced in compliance with all applicable federal requirements with respect to fair labor standards and equal employment opportunity.

7. **LIMITED WARRANTY ON PRODUCT.** Seller warrants that all Products are warranted to be free of defects in material and workmanship for a period of two (2) years from the date of shipment. Products returned under the above warranty shall be either repaired or replaced at the sole discretion of Infab Corporation, and is limited to the value of the Products on the date of the original shipment. All replaced parts and Product become the property of Seller. This limited warranty does not include service to repair damage to the Product resulting from customer's negligence, misuse, modification of the Product, or use for purposes other than those intended by its manufacture. Seller's obligations under this limited warranty are conditioned upon Customer's compliance with Seller's reasonable instructions and requests in connection with its performance of such obligations. Service under this limited warranty may be obtained by delivering the Product at Customer's expense (using the original shipping container or its equivalent) during the warranty period to the manufacturer and providing proof of purchase date. Customer shall assume the risk of loss or damage in transit. Seller shall bear the cost for return of repaired or replaced Product under valid warranty claims to Customer by normal commercial means in the continental United States. For further information, refer to the Limited Warranty contained in Seller's standard product literature, if applicable.

NOTE: All aprons must be inspected by the facility before they are put into service. No returns for aprons with alleged pinholes, tears, or cracks will be allowed more than seven (7) days after the aprons have been received by the end user. Protective core material is fragile, easily damaged and therefore great care is needed to protect the integrity of the core material. All aprons are inspected and free of defects when they are shipped. Pinholes, tears, cracks and other damage to the protective core material can be caused by many different factors, but if they are not there when the apron is received and inspected, then they are not the responsibility of the manufacturer and the warranty does not apply.

EXCEPT AS SET FORTH HEREIN AND IN THE LIMITED WARRANTY INCLUDED IN SELLER'S STANDARD PRODUCT LITERATURE, IF APPLICABLE, SELLER HEREBY DISCLAIMS ALL OTHER WARRANTIES, EXPRESS OR IMPLIED, ARISING OUT OF OR IN CONNECTION WITH THE SALE OR USE OF THE EQUIPMENT, INCLUDING, BUT NOT LIMITED TO, THE IMPLIED WARRANTIES OF MERCHANTABILITY AND FITNESS FOR A PARTICULAR PURPOSE. OTHER THAN AS STATED ABOVE THE LIMITED WARRANTY

SET FORTH IN THIS SECTION, COMBINED WITH THE LIMITED WARRANTIES CONTAINED IN SELLER'S STANDARD PRODUCT LITERATURE, IF APPLICABLE, SHALL CONSTITUTE THE SOLE AND EXCLUSIVE REMEDY OF CUSTOMER AND SHALL ESTABLISH THE SOLE AND EXCLUSIVE LIABILITY OF SELLER, ITS SUCCESSORS OR ASSIGNS IN CONNECTION WITH THE PRODUCT. IN NO EVENT WILL SELLER BE LIABLE TO CUSTOMER FOR ANY DAMAGES, INCLUDING SPECIAL, INCIDENTAL OR CONSEQUENTIAL DAMAGES, ARISING OUT OF THE USE OR INABILITY TO USE SUCH PRODUCT, EVEN IF SELLER HAS BEEN ADVISED OF THE POSSIBILITY OF SUCH DAMAGES, OR ANY CLAIM BY ANY OTHER PARTY. SOME STATES DO NOT ALLOW THE LIMITATION OR EXCLUSION OF IMPLIED WARRANTIES OR OF LIABILITY FOR SPECIAL OR CONSEQUENTIAL DAMAGES, SO THE ABOVE LIMITATION OR EXCLUSION MAY NOT APPLY TO YOU. SOME STATES DO NOT ALLOW THE LIMITATION OF LIABILITY OR THE EXCLUSION OF IMPLIED WARRANTIES, SO THE ABOVE LIMITATIONS AND EXCLUSIONS MAY NOT APPLY AND CUSTOMER MAY ALSO HAVE OTHER RIGHTS WHICH VARY FROM STATE TO STATE.

8. **DAMAGE IN SHIPMENT.** The packaging of Infab products meets or exceeds all requirements of the Consolidated Freight Classifications. However, all packages should be checked immediately upon arrival at Customers facility. Should any concealed damage be suspected the Customer shall note it on the Bill of Lading when received. If any concealed damage is discovered, place a hold the shipping container and contact the carrier to schedule an inspection. Any claim must be made directly to the carrier within 15 48 hours of merchandise or the claim may not be allowed. Any claim for damage must be made directly with the carrier. Infab cannot file a claim in the name of or for the benefit of the Customer. Failure to follow this exact procedure could invalidate your claim.

9. **DELIVERY.** All stock items are shipped from our warehouse the same day if P.O. is received before noon. Otherwise it will ship next day. Non-stock or custom items (such as modified or special size aprons and/or monogramming) are shipped within 7 to 10 days of our receipt of your completed order. All special services such as UPS Blue or Red, Fed-Ex, Airborne, etc. can be accommodated at actual cost.

10. **MINIMUM ORDERS.** We do not impose minimum order requirements.

11. **EXCHANGES OR RETURNS.** Exchanges or Returns must have prior approval by notifying us within 10 days of receipt of the order whether shipped direct to you or drop shipped to your customer.